

Louhi 8.15 instructions

1 About the Service.....	2
General information about the service.....	2
Technical requirements for the service.....	2
User authentication and use rights	2
Getting started and navigating on the map	2
Map controls	3
2 Search.....	3
Overview of the functionality	3
Basic Search tool.....	3
Route Search tool.....	4
Advanced Search tool	5
Search results	6
3 Map Layers and Data Sets	8
Overview of the functionality	8
Displaying maps.....	9
Displaying objects on the map.....	9
Object information	10
4 Now on Map (Legend) & MiniMap.....	10
Overview of the functionality	10
MiniMap	11
5 Map Functions	11
Overview of the functionalities.....	11

1 About the Service

General information about the service

The SpatialWeb-powered service by Sitowise offers an interactive way of using maps and viewing objects. You can navigate freely between map views and search functions, change maps (layers and data sets), select material to be displayed on the map as well as use different map functions.

Technical requirements for the service

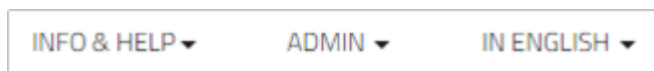
The Service supports the following browsers: Chrome, Firefox, Internet Explorer 11, and Apple Safari. Use of the service requires enabling both JavaScript and cookies. However, the service works without add-ons such as Java virtual machine.

User authentication and use rights

The set of available materials and functions varies depending on the user. Different versions of the service may be available for subscribed users or authorities. **Some of the functions described in this manual may not be available for all users.**

Login to the service requires a username and a password. To log in, enter your username and password in their respective fields on the login page.

When you are logged in, you will see your username displayed in the top right corner of the page to the right of the Info & Help menu.



Getting started and navigating on the map

Finnish is the default language of the service. You can change the language in the top right corner of the page.

You can start using the service by selecting material (map layers, data sets) from the menu on the left side of the page (Layers) or by searching the desired item with the Search function (Search). To return to the initial map view, click on the right-hand logo in the top left corner of the page. To access the municipality or city home page, click on the left-hand logo in the top left corner of the page.

To navigate on the main map, move the map with mouse by holding down the left mouse button and dragging the map in the desired direction. You can also change the focus of the map window by clicking on a new location on the MiniMap in the lower right corner of the page.

Map controls

In the top right corner of the **2D map view**, there are buttons for zoom in and zoom out, a disc for rotating the map in different directions, a so-called reset button for restoring the default position of the map as well as a slider for switching between 2D and 3D map views. In addition to these, in the **3D map view**, there are also buttons for tilt up and tilt down.

The map is zoomed in with the plus (+) button and zoomed out with the minus (-) button. In the 2D map view, the map can also be zoomed in by double-clicking on a desired location on the map. Furthermore, in both map views, the map can be zoomed in and out with a wheel mouse by scrolling forwards (zoom in) and backwards (zoom out).

Moreover, the map can be rotated in different directions with the disc by taking the map cursor over the letter 'N' on the disc, holding down the left mouse button, and turning the disc in the desired direction. The letter 'N' indicates North. By clicking on the so-called reset button, the initial or default map position can be restored.

With the tilt up and tilt down buttons, the map can be tilted upwards and downwards.

By clicking on the slider control, the user can switch between 2D and 3D map views.

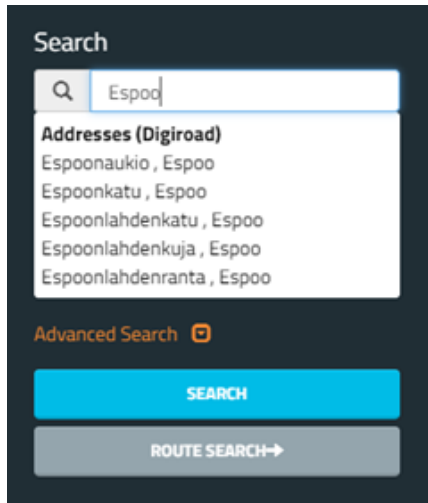
2 Search

Overview of the functionality

The Search functionality allows the user to search for objects in the service. You can access the functionality from the menu on the left side of the page. Search can be performed as basic (text) search, advanced search, or route search. The set of available searchable objects varies depending on service and user profiles.

Basic Search tool

In the empty search field, enter the address of the searchable object (or other keyword*). The search functionality searches for that keyword based on the characters in the text field. The functionality utilizes predictive text search which means that the search field suggests objects in the service that correspond to the keyword you have entered. You must enter at least three (3) characters to active the autocomplete in the search field.



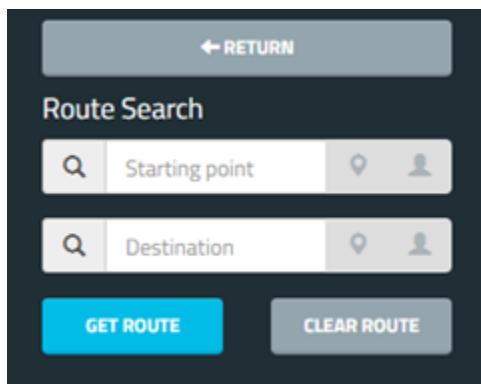
To execute the search, click on the Search button, or press the Enter key on the keyboard.

*In addition to address, other keywords may include e.g. place-name, district, service, property ID, building name, or construction ID.

Route Search tool

With the Route Search functionality, you can search for a route between two map points. The map point can be either an address, a map location, or the current user location, and the search can be performed for different combinations thereof.

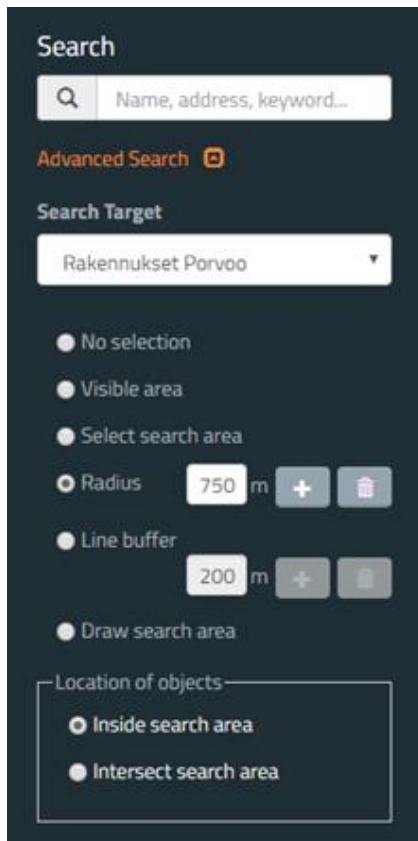
To start route search, click on the Route Search button in the Search window. Next, enter the starting point and the destination in their respective fields and click on the Get route button.



The route is drawn on the map as a red line.

Advanced Search tool

Click on the red Advanced Search text under the Search text field and select the search target from the drop-down menu. This will open several search fields that can be used for further defining the search.



Next, select one of the following options to narrow down the search area:

1. No selection
2. Visible area
3. Select search area
 - For regional objects, you must first select regional boundaries.
 - Select the desired area on the map with mouse.
 - If there are multiple overlapping objects on the map, a drop-down menu appears from which you can select the desired object. To select all regional objects in the desired area, hold down the right mouse button and draw a rectangle on the map.

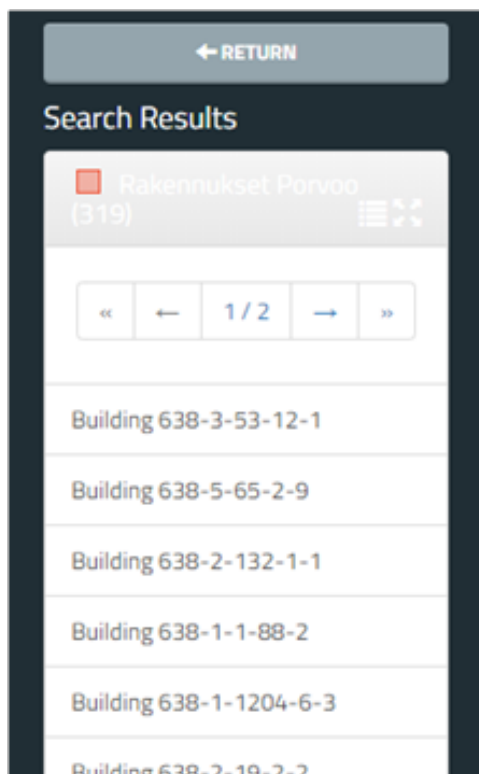
4. Radius
 - Enter the desired radius value in the respective field and add the center point of the search by clicking it on the map.
5. Line buffer
 - Enter the desired diameter value for the line buffer in the respective field and add corner points for the line by clicking them on the map.
6. Draw search area
 - Add corner points for the search area by clicking them on the map

Lastly, select whether the search objects are inside or intersect the search area.

Start the search by clicking on the Search button.

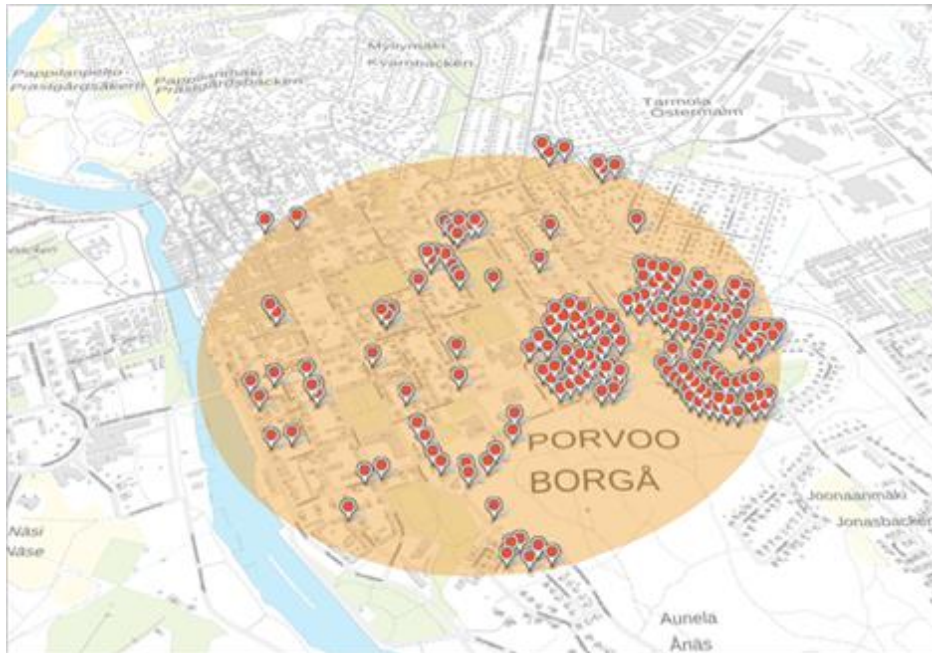
Search results

The search results will open as a list to the left of the map view, and the results are categorized in target categories. In addition, the search results will be displayed in the map window.



When you click on an item in the search results list, the map view will be automatically focused on that object in the related map area. By clicking on the object's icon on the map, you will see

further information on the object. If there are multiple overlapping objects in the same location, a drop-down menu appears on the map from which you can select the desired object.



When you click on the table icon (Data View) on the right side of the search results list name, the search results will open as tabbed data view in a new window at the bottom of the page.

From the data view, you can access a single search result on the map by clicking on the Show button on the left side of the result details. To export search results to a file, select first the desired file format from the pop-up menu in the lower right corner of the data view window, and then click on the Download button.

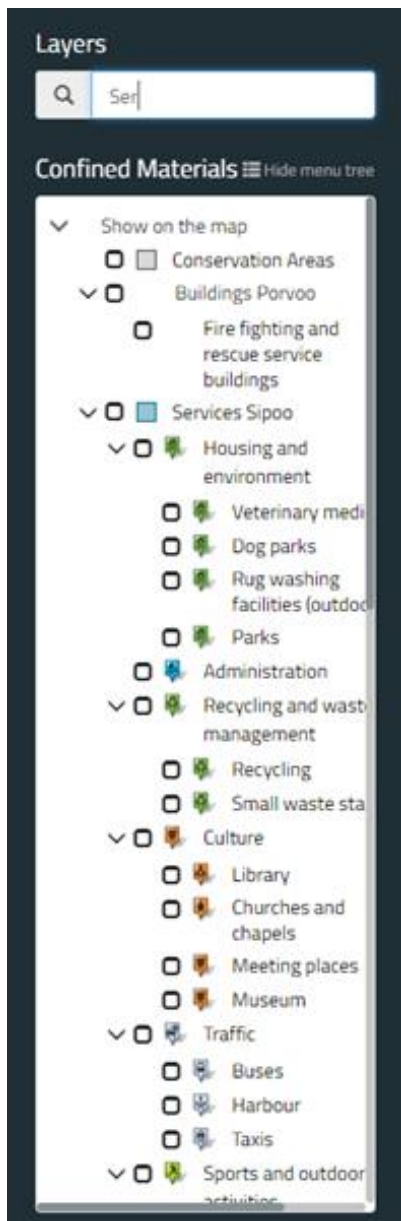


3 Map Layers and Data Sets

Overview of the functionality

Map layers and object classes displayed in the service can be accessed from the menu on the left side of the page (Layers).

The layers view can be delimited by entering a keyword, e.g. part of a layer name, in the Filter layers field. In addition, the view can be modified with the Show menu tree and Hide menu tree functions.



Displaying maps

To expand a map layer or object class group in the menu tree, click on the arrow icon to the left of the group name.

The background map displayed in the service can be selected by clicking on the map name in the menu tree or by selecting the check box next to the map name. Maps can be viewed on top of each other by selecting multiple maps (layers) simultaneously. Removing the selection from the check box next to the map name also removes that layer from the map window.

Displaying objects on the map

The object class displayed in the service can be selected by clicking on a class name in the menu tree or by selecting the check box next to the class name. Material can be viewed on top of each other by selecting multiple object classes simultaneously. Removing the selection from the check box next to the class name also removes the objects from the map.

Object information

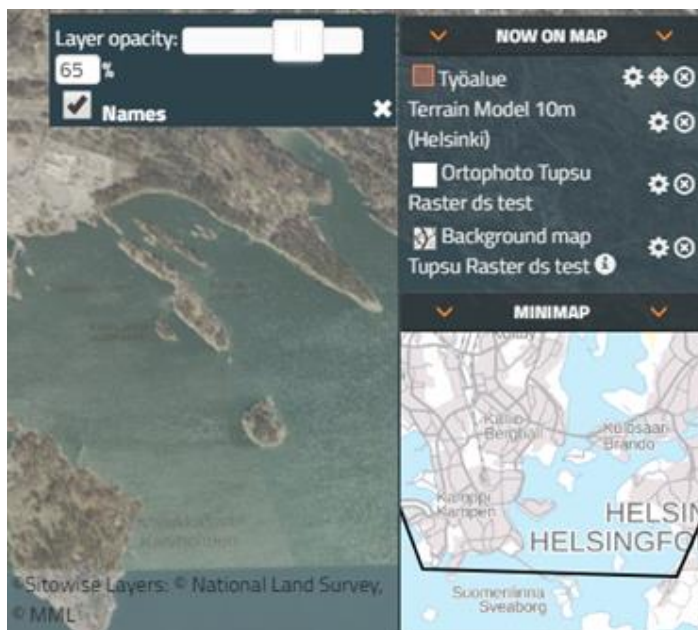
To view object information, hover the mouse cursor over the object's icon on the map.

To view detailed object information, click on the object icon. If there are multiple overlapping objects on the map, a menu is displayed from which you can select the desired object.

4 Now on Map (Legend) & MiniMap

Overview of the functionality

In the lower right corner of the page, there is a window or view titled Now on Map (also called Legend) which lists all material currently active in the map window. In the Now on Map view, you can reorganize and remove these active layers. In addition, you can adjust layer opacity (transparency), activate the names display for layer objects, focus the map view on a desired layer as well as view additional information on layers (not available for all layers).



The layers are displayed in the same order they are listed. Thus, the background map or material which appears last in the list is also the bottom layer in the map view and vice versa. Layers can be reorganized by dragging them up or down on the list with mouse (“drag-and-drop”). In addition, layers can be removed from the list and thereby from the map window by clicking on the tick icon (Remove) next to the layer name.

Layer settings can be opened by clicking on the wheel icon (Layer settings) next to the layer name.

Layer opacity can be adjusted by moving the slider with mouse or by entering a desired value in the field below the slider. The value in the field represents layer opacity as a percentage (0% = most dim and 100% = most opaque). The names of layer objects on the map can be viewed by selecting the check box (Names) below the slider and the percentage field.

The map view can be focused on a desired layer by clicking on the diamond-shaped icon (Fit view to layer) next to the layer name. Thus, the map will be focused automatically so that all layer objects are displayed in the middle of the map view.

Some layers have the letter ‘i’ (Information) next to the layer name. By clicking on the letter icon, the user can open a new window in which additional information on that layer is displayed.

MiniMap

In the lower right corner of the page under the Now on Map view, there is a window titled MiniMap whose view matches the currently active background map on a small scale. In the MiniMap, a red selection frame is displayed, and by moving and clicking on the frame, the map view can be focused on different locations on the background map.

The size of the selection frame changes when the map is zoomed in and out. The more the map is zoomed in, the smaller the selection frame is, and the more the map is zoomed out, the larger the frame becomes.

5 Map Functions

Overview of the functionalities

With map functions, you can perform various actions on the maps as well as change their appearance. The following map functions are located at the top of the map view:

- Home View
- Dim Map
- Measure
- Names
- Fit View
- Coordinate Tool

- User Map Settings
- My Location
- TimeSlider
- (Open Thematic Maps Settings).

The rest of the functions are located in the menu on the left side of the page:

- Search (see ch. 2)
- Layers (see ch. 3)
- Share
- Print
- Download
- My Maps.

Home View 

The home view is a function return the map to initial state.

Dim Map 

The Dim Map function dims the active background map and map layers. Thus, layer objects are highlighted.

Measure 

Select the most suitable measuring option.

1. Distance

- Place the starting point for the measurement by clicking it on the map with mouse.
- Add waypoints to the measurement by clicking them on the map with mouse. The measurement is displayed on the map as a yellow line.
- You can undo the previous (most recent) point by clicking on the Remove last point button.
- You can remove any of the waypoints by hovering the mouse cursor over that point and clicking the left mouse button.
- You can add a new waypoint between existing waypoints by clicking on the yellow line.
- You can move waypoints by dragging them with mouse.
- Finish drawing by second-clicking on the last point of the measurement. The distance between waypoints is displayed on the screen in metres. The total distance between the starting and the end point is displayed in (kilo)metres.
- The measurement can be saved as a map layer by clicking on the Save button, and its details can be viewed by clicking on the Report button. Map features can be

measured by first clicking on the Measure map features button and then selecting a saved feature on the map.

- Exit the measurement mode by clicking on the End measuring button.

2. Area

- Add the waypoints of the area by clicking them on the map with mouse. Finish drawing by double-clicking on the last point of the measurement.
- You can undo the previous (most recent) point by hovering the mouse cursor over that point and clicking the left mouse button. (If you haven't finished the drawing, you can undo a point by clicking on the Remove last point button.)
- You can remove any of the waypoints by hovering the mouse cursor over that point and clicking the left mouse button.
- You can add a new waypoint between existing waypoints by clicking on the yellow line.
- You can move waypoints and thereby change the shape of the area by dragging the points with mouse.
- The measured area is displayed on the screen in square (kilo)meters/hectares.
- The measurement can be saved as a map layer by clicking on the Save button, and its details can be viewed by clicking on the Report button. Map features can be measured by first clicking on the Measure map features button and then selecting a saved feature on the map.
- Exit the measurement mode by clicking on the End measuring button.

3. Measure map features

- Click on the Measure map features button and then select any linear or regional object on the map. The selected object is highlighted.
- The object must be saved as a layer before it can be measured.
- Detailed information on the length and/or area of the selected object(s) will be displayed in a new panel.
- Clear the information in the panel by clicking on the Clear button. Close the panel by clicking on the Close button.

Names 

The Names function displays the names of the layer objects in selected (active) object classes on the map.

Fit View 

The Fit View function adjusts the map view to display all objects in selected (active) object classes on the map.

Coordinate Tool



With the Coordinate Tool, you can point a location on the map and view its coordinates as well as search for a location whose coordinates you already know and display that location on the map. In addition, you can change the coordinate system in use.

User Map Settings



With the User Map Settings function, you can view shadows and meshes below terrain on the map at a desired time.

My Location



The My Location function displays the current user location on the map.

TimeSlider



The TimeSlider function allows you to delimit the map view in accordance with a specific time period when time-dependent layers are active. You can set the start and end time of the period either by moving the pointers on the time scale that opens at the bottom of the map view, or by entering the dates and times of your choice in their respective fields in a separate settings window.

(Open Thematic Maps Settings)



With the Thematic Maps Settings function, you can customize a thematic map view by editing its settings. The available settings depend on enabled layers. From the settings view, you can also access further information on that map (Dataview).

Share



With the Share function, you can create a link to the current map view including information such as map location, background map, and active layers. You can also add an optional comment or drawing (point, line, or area) and include those in the link. Once finished, the link can be copied.

In addition, you can create an embedded map in which you may include MiniMap, Now on Map, map toolbar, and link to full map service. In the preview of the embedded map, you can even change the size of the embedding as well as the starting position of the map. The embedded map link can be copied to the page on which the map will be displayed.

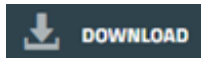
Print



With the Print function, you can print the current map view as follows:

- Select the paper size, paper orientation, and scale from their respective drop-down menus.
- Add an optional comment to the print.
- Point with your mouse cursor on a desired location on the map and click to set the center point of the print.
- Print the map view by clicking on the Print button.

Download



With the Download function, you can export data to a file from the map window (all active objects or visible map area) or a user-defined area. The export area can be defined by using a radius or line buffer, or you can draw the area yourself. The file format of the export is user-selectable. To display Download feature on main site, it should be active from admin.

My Maps



With the My Maps function, you can create and save map states for your username, and in these states, you may include selected information.

A saved map state can be set as the start-up state of the map service by clicking on the tag icon (Set as start-up state) next to the state name in the My Maps list, and the start-up setting can be removed by clicking on the same icon again. Furthermore, a saved map state can be completely removed by clicking on the trash can icon (Remove) next to the state name in the My Maps list.

Save map state as follows:

- Click on the Save Map State button, and then select the information you wish to include: Map location, Enabled layers, Menu tree state, and Current searches.
- Enter a name for the map state.
- Click on the Save button.